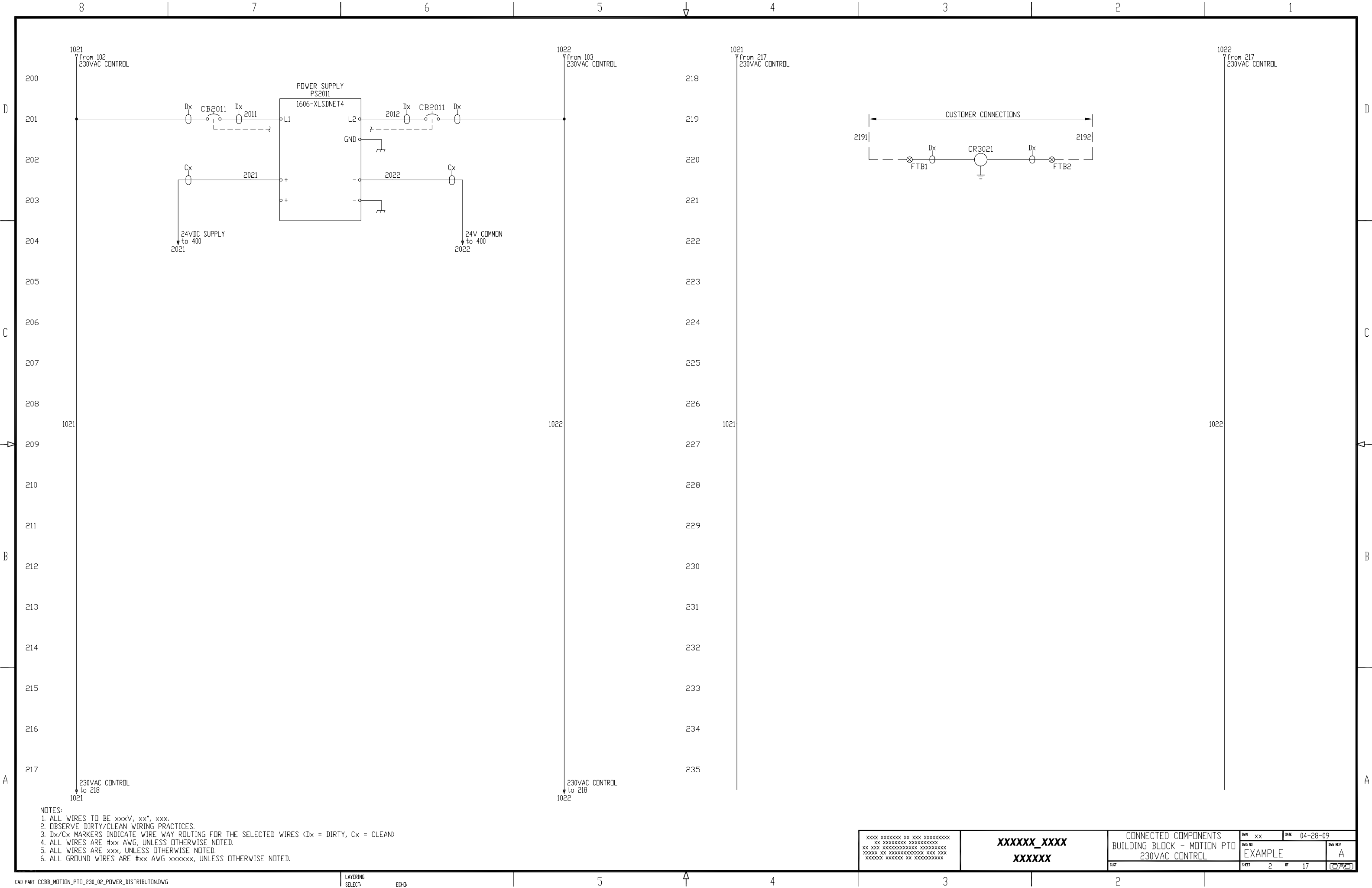
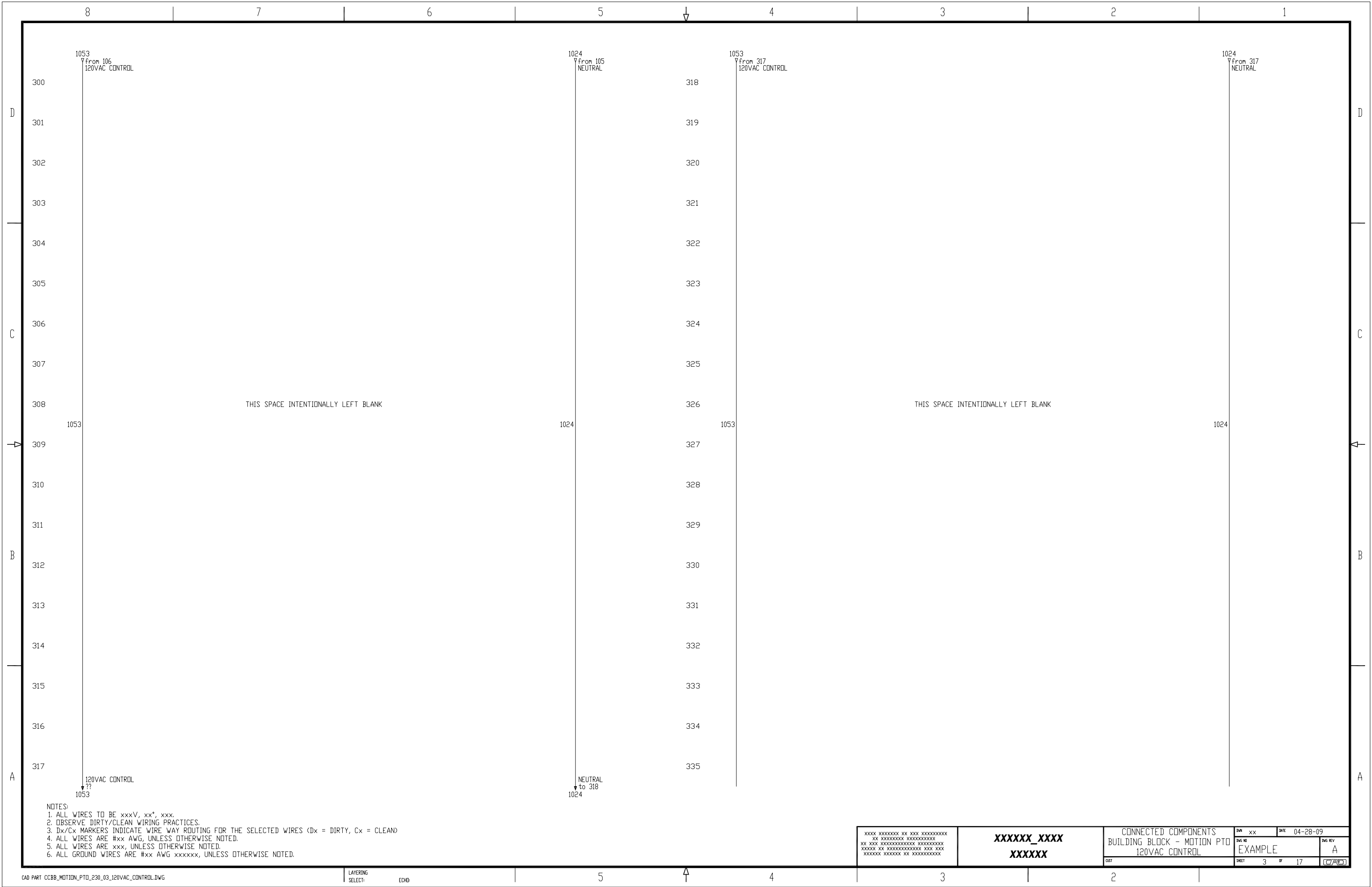
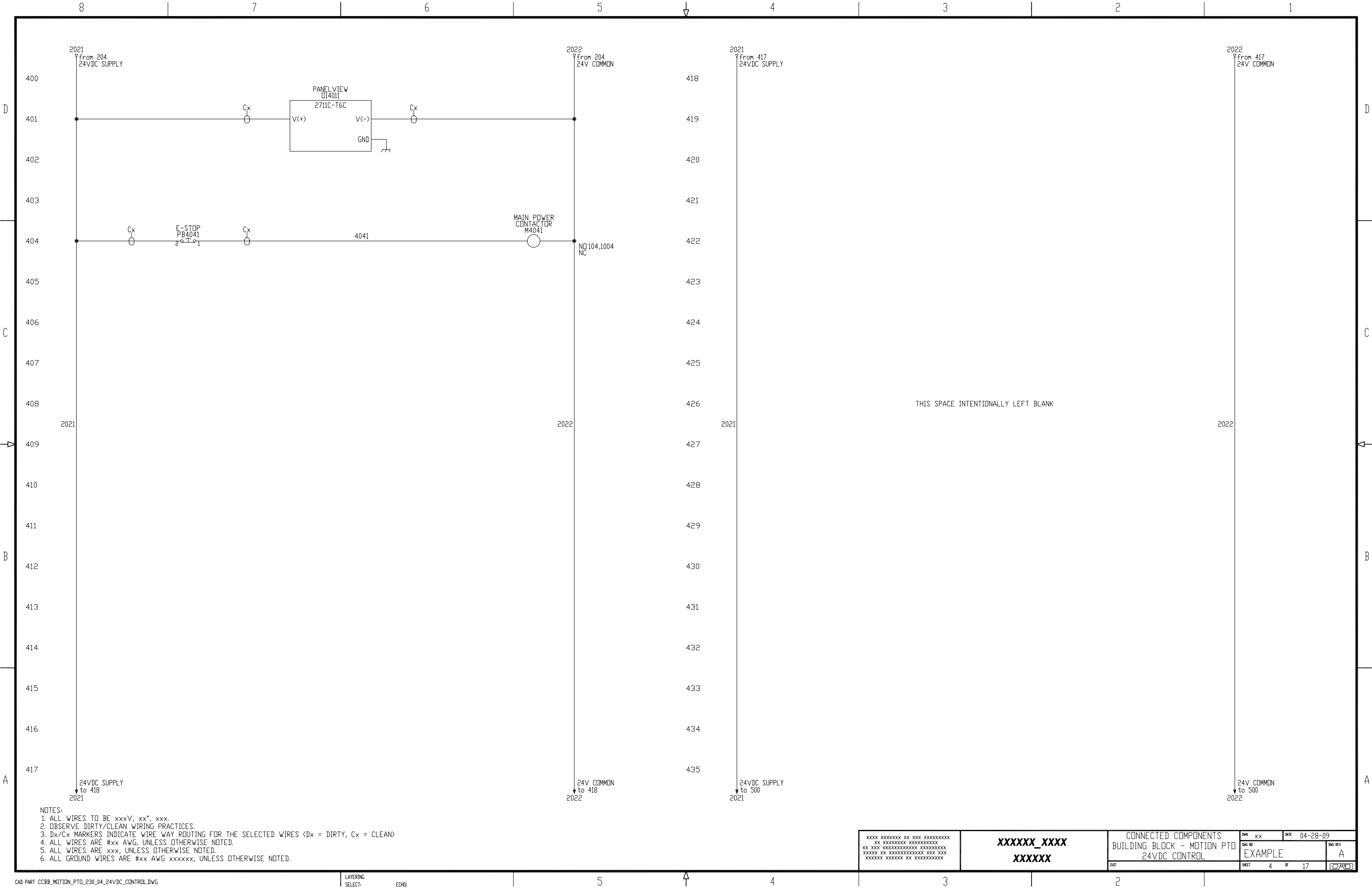


NOTES:
1. ALL WIRES TO BE xxxV, xx*, xxx.
2. OBSERVE DIRTY/CLEAN WIRING PRACTICES.
3. Dx/Cx MARKERS INDICATE WIRE WAY ROUTING FOR THE SELECTED WIRES (Dx = DIRTY, Cx = CLEAN)
4. ALL WIRES ARE #xx AWG, UNLESS OTHERWISE NOTED.
5. ALL WIRES ARE xxx, UNLESS OTHERWISE NOTED.
6. ALL GROUND WIRES ARE #xx AWG xxxxxx, UNLESS OTHERWISE NOTED.

XXXX XXXXXXXX XX XXX XXXXXXXXXX XX XXXXXXXXXXXXXXXXXXXXXXXX XXXXXX XX XXXXXXXXXXXXXXXX XXX XXX XXXXXX XXXXXXXX XX XXXXXXXXXX	XXXXXX_XXXX XXXXXX	CONNECTED COMPONENTS BUILDING BLOCK - MOTION PTO DRIVE POWER DISTRIBUTION	DWG NO EXAMPLE	DWG REV A
DATE 04-28-09	SHEET 1	OF 17	CADD	







xxxx xxxxxxxx xx xxx xxxxxxxx
xx xxxxxxxx xxxxxxxx
xx xxx xxxxxxxx xxxxxxxx
xxxxxx xx xxxxxxxx xxx xxx
xxxxxx xxxxxx xx xxxxxxxx

xxxxxx_xxxx
xxxxxx

CONNECTED COMPONENTS
BUILDING BLOCK - MOTION PTO
24VDC CONTROL

DWN xx

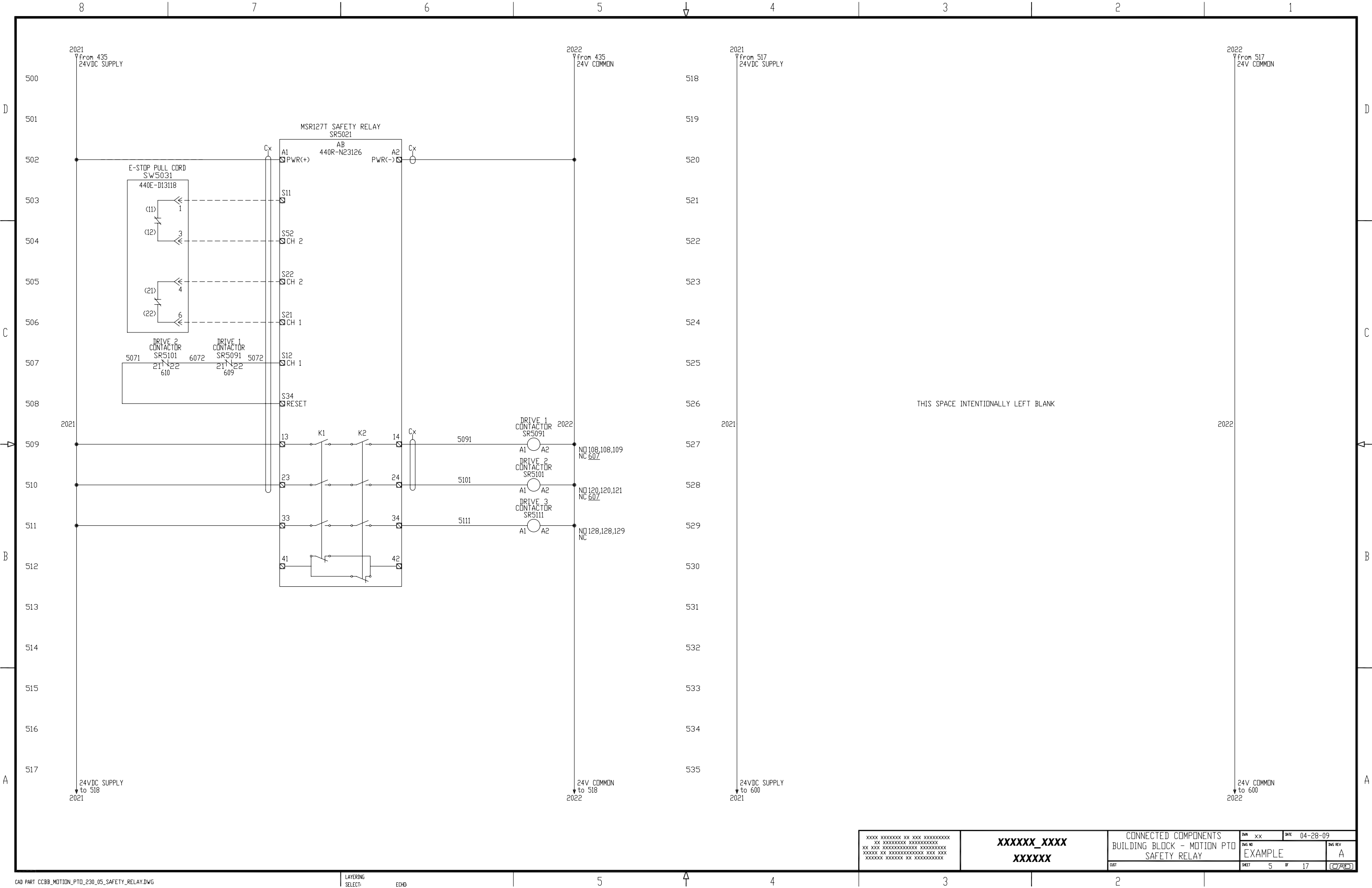
DATE 04-28-09

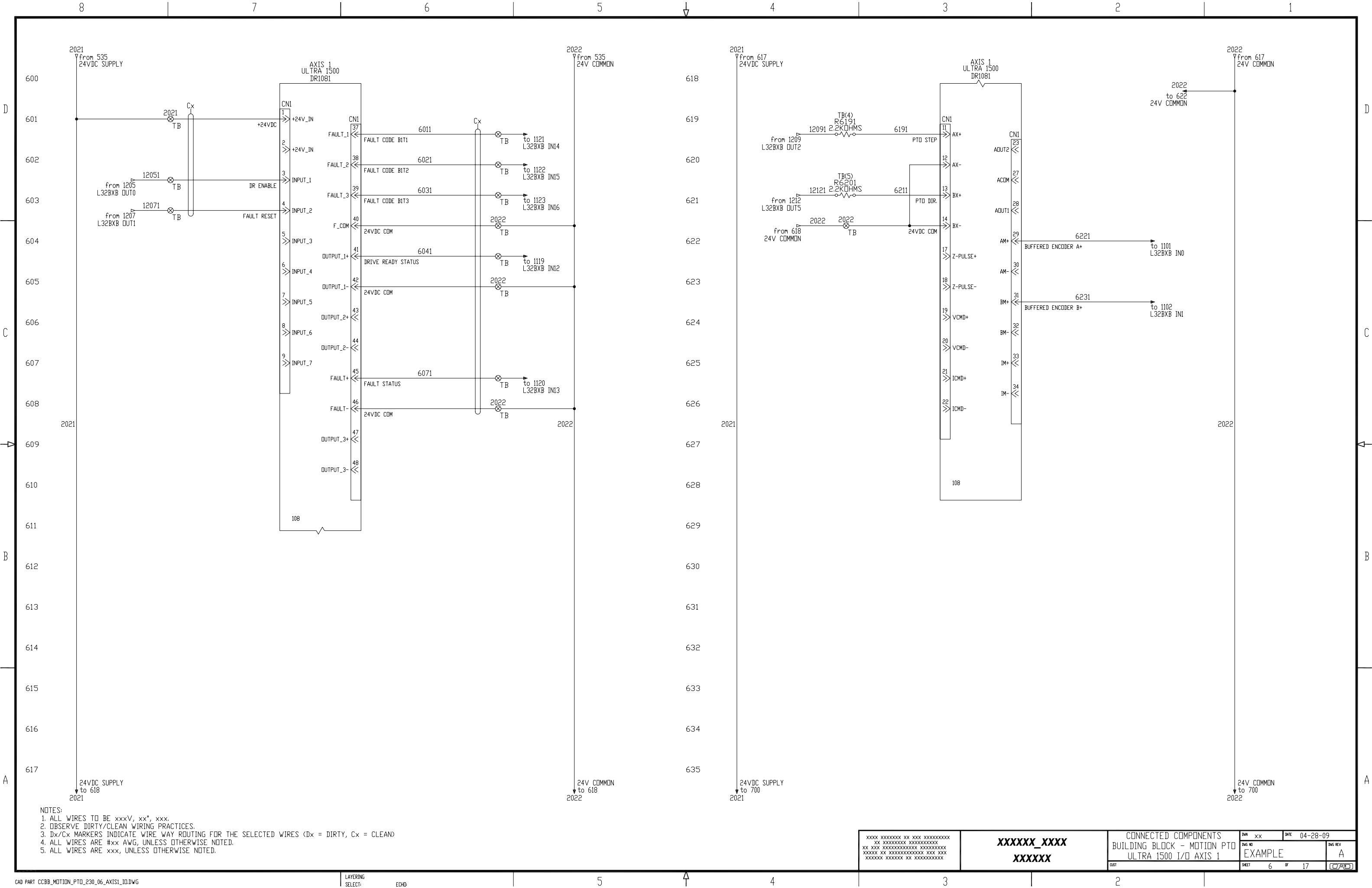
DWG NO
EXAMPLE

DWG REV
A

SHEET 4 OF 17

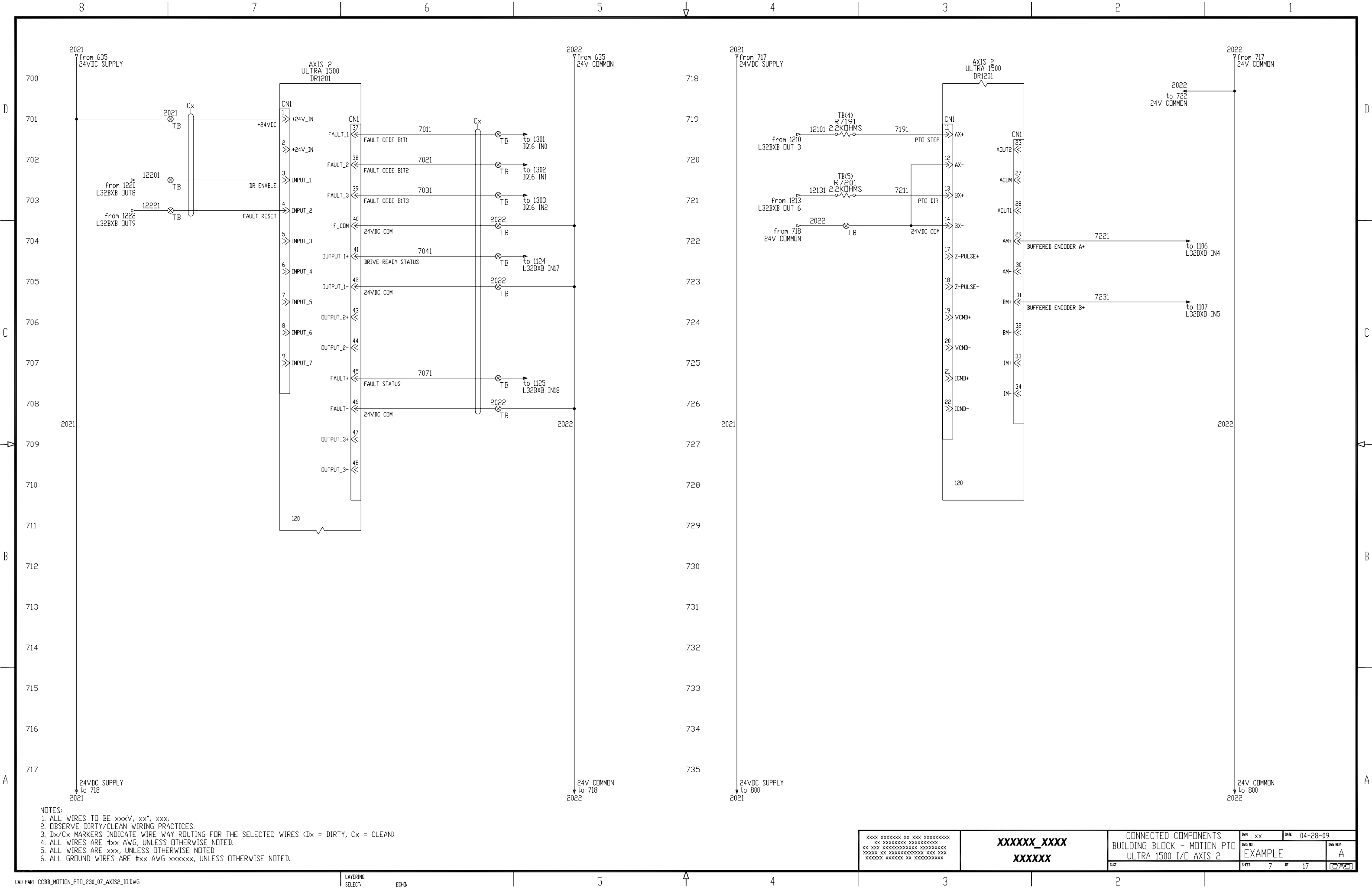
CAD





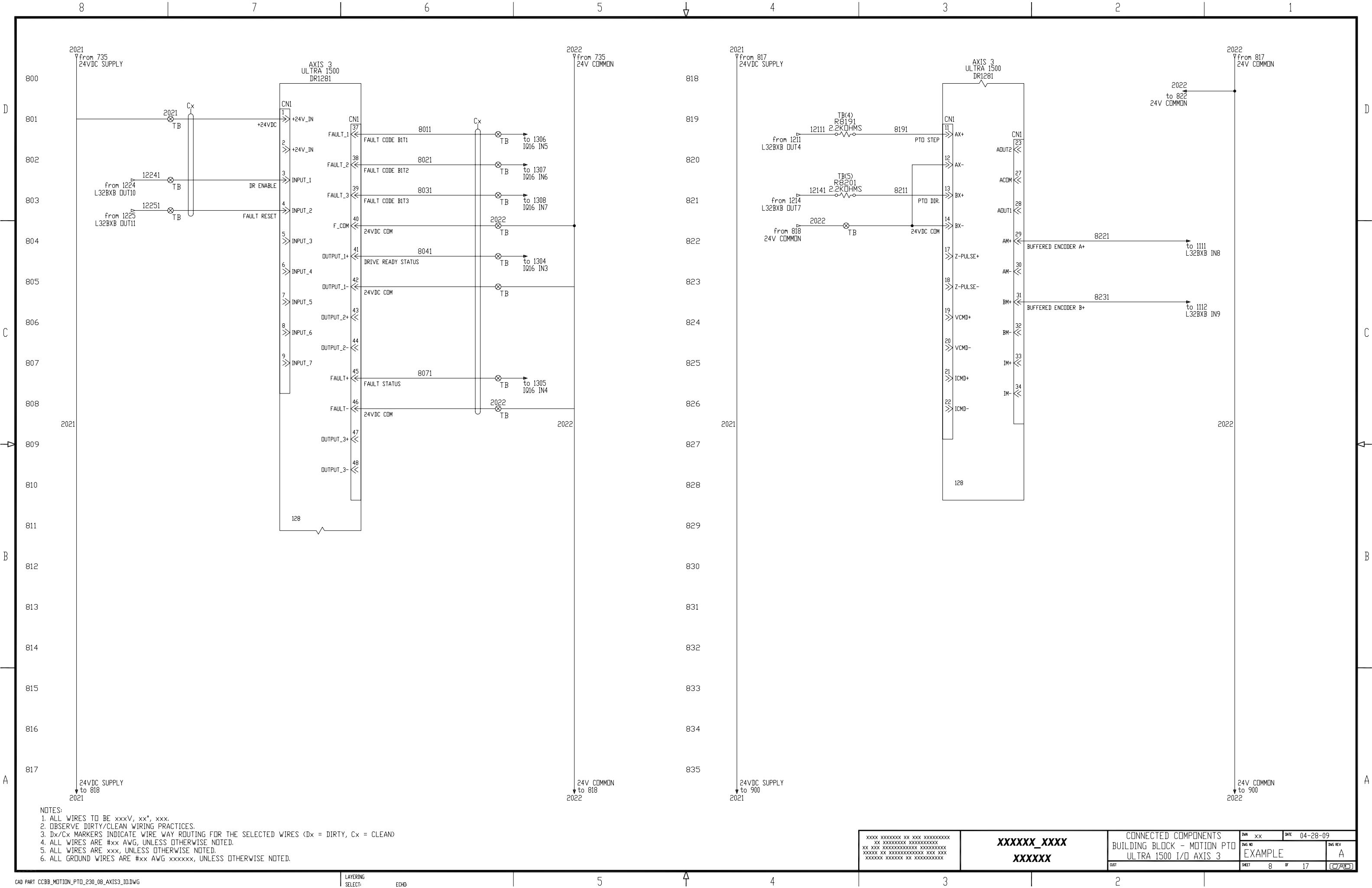
NOTES:
1. ALL WIRES TO BE xxxV, xx*, xxx.
2. OBSERVE DIRTY/CLEAN WIRING PRACTICES.
3. Dx/Cx MARKERS INDICATE WIRE WAY ROUTING FOR THE SELECTED WIRES (Dx = DIRTY, Cx = CLEAN)
4. ALL WIRES ARE #xx AWG, UNLESS OTHERWISE NOTED.
5. ALL WIRES ARE xxx, UNLESS OTHERWISE NOTED.

XXXX XXXXXXXX XX XXX XXXXXXXXXX XX XXXXXXXXXXXX XXXXXXXXXXXX XXXXXX XX XXXXXXXXXXXXXXX XXX XXX XXXXXXXX XXXXXX XX XXXXXXXXXXXX		XXXXXX_XXXX XXXXXX	CONNECTED COMPONENTS BUILDING BLOCK - MOTION PTO ULTRA 1500 I/O AXIS 1	DWG NO EXAMPLE	DWG REV A
CUST		SHEET 6	OF 17	DATE 04-28-09	



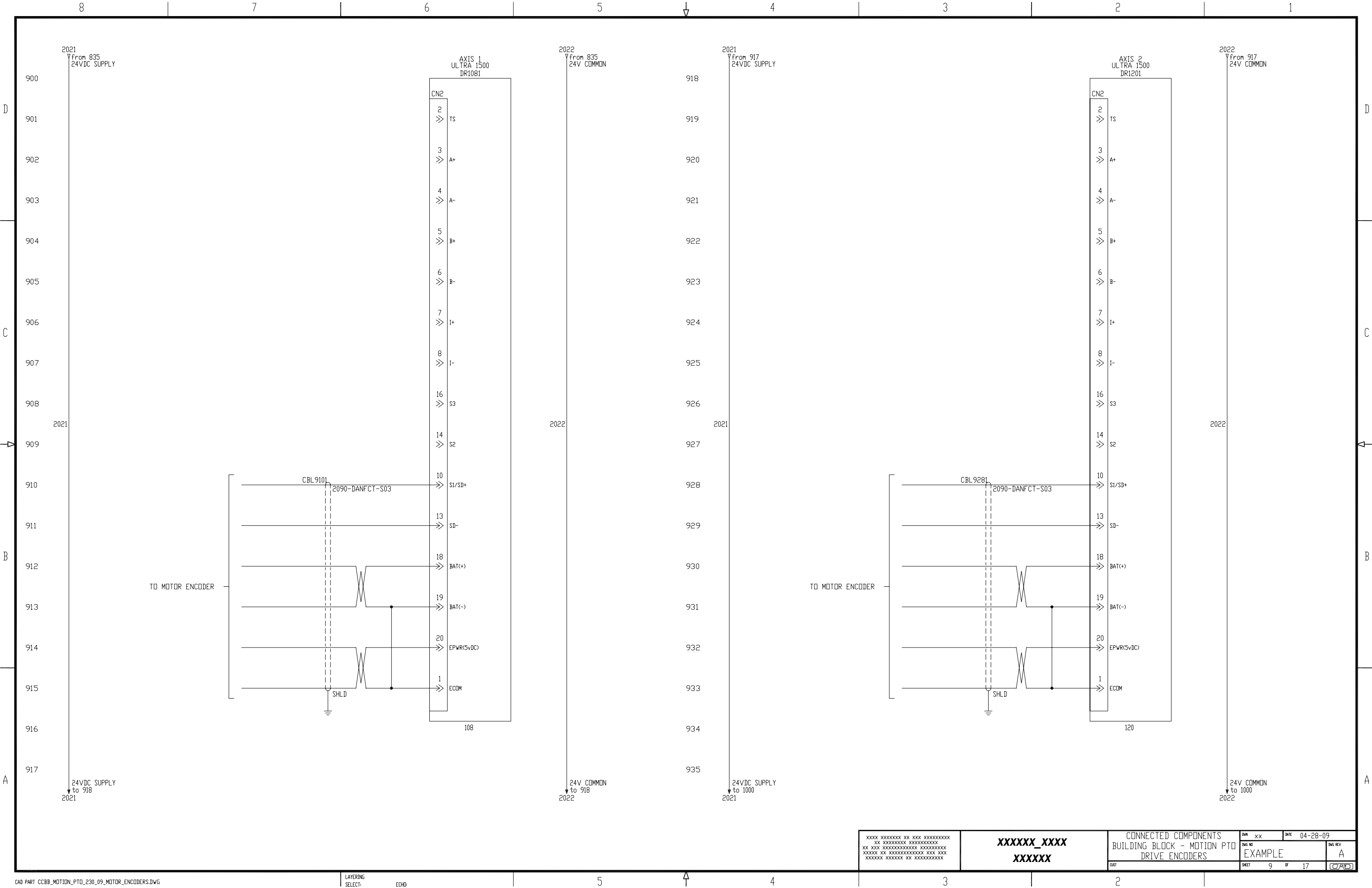
NOTES:
1. ALL WIRES TO BE xxxV, xx*, xxx.
2. OBSERVE DIRTY/CLEAN WIRING PRACTICES.
3. Dx/Cx MARKERS INDICATE WIRE WAY ROUTING FOR THE SELECTED WIRES (Dx = DIRTY, Cx = CLEAN)
4. ALL WIRES ARE #xx AWG, UNLESS OTHERWISE NOTED.
5. ALL WIRES ARE xxx, UNLESS OTHERWISE NOTED.
6. ALL GROUND WIRES ARE #xx AWG xxxxxx, UNLESS OTHERWISE NOTED.

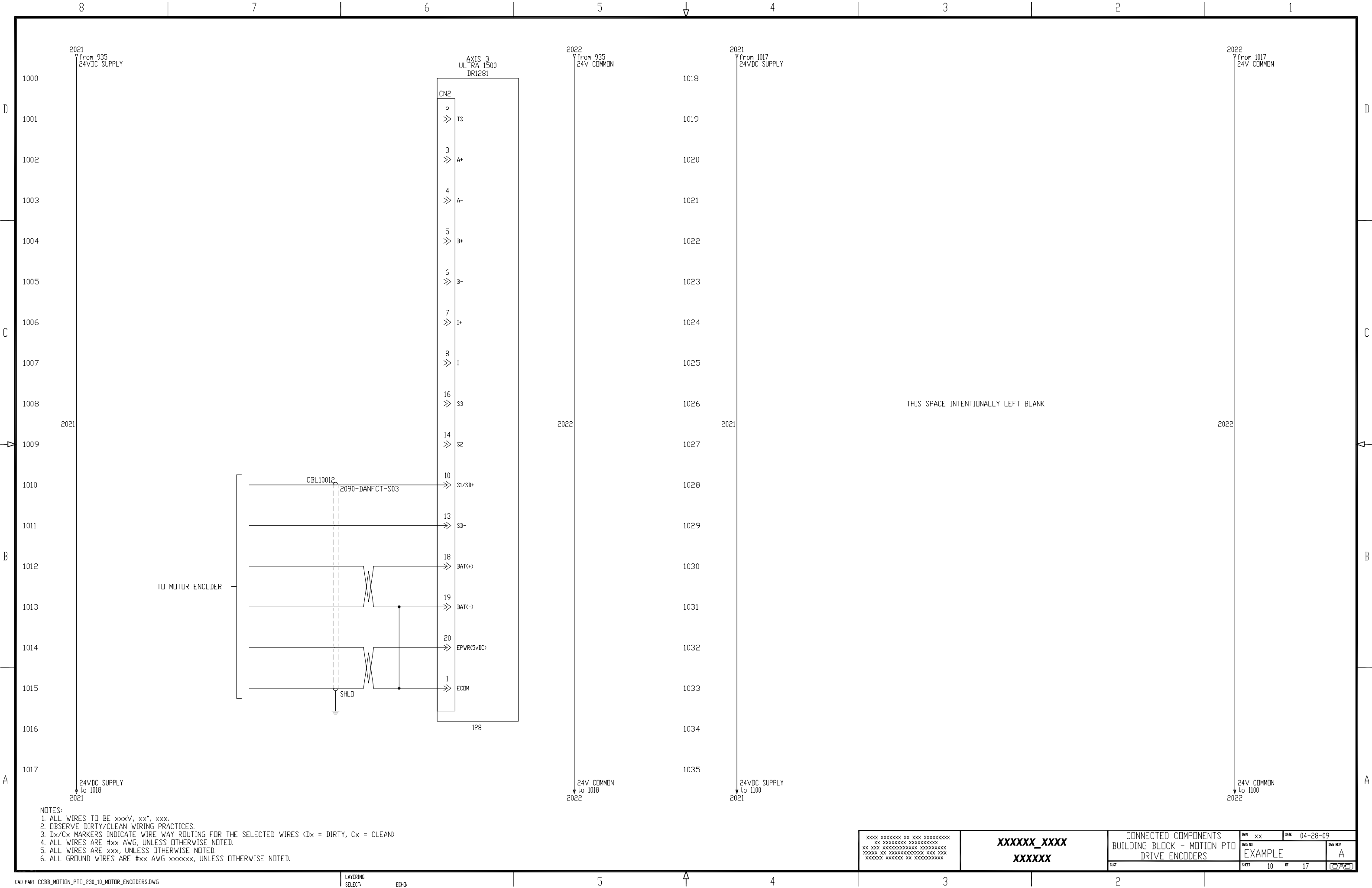
XXXX XXXXXXXX XX XXX XXXXXXXXXX XX XXXXXXXXXXXX XXXXXXXXXXXX XXXXXX XX XXXXXXXXXXXXXXXX XXX XXX XXXXXXXX XXXXXX XX XXXXXXXXXXXX	XXXXXX_XXXX XXXXXX	CONNECTED COMPONENTS BUILDING BLOCK - MOTION PTO ULTRA 1500 I/O AXIS 2		DWG NO EXAMPLE	DWG REV A
		DATE 04-28-09	SHEET 7	OF 17	DWG REV A



NOTES:
1. ALL WIRES TO BE xxxV, xx*, xxx.
2. OBSERVE DIRTY/CLEAN WIRING PRACTICES.
3. Dx/Cx MARKERS INDICATE WIRE WAY ROUTING FOR THE SELECTED WIRES (Dx = DIRTY, Cx = CLEAN)
4. ALL WIRES ARE #xx AWG, UNLESS OTHERWISE NOTED.
5. ALL WIRES ARE xxx, UNLESS OTHERWISE NOTED.
6. ALL GROUND WIRES ARE #xx AWG xxxxxx, UNLESS OTHERWISE NOTED.

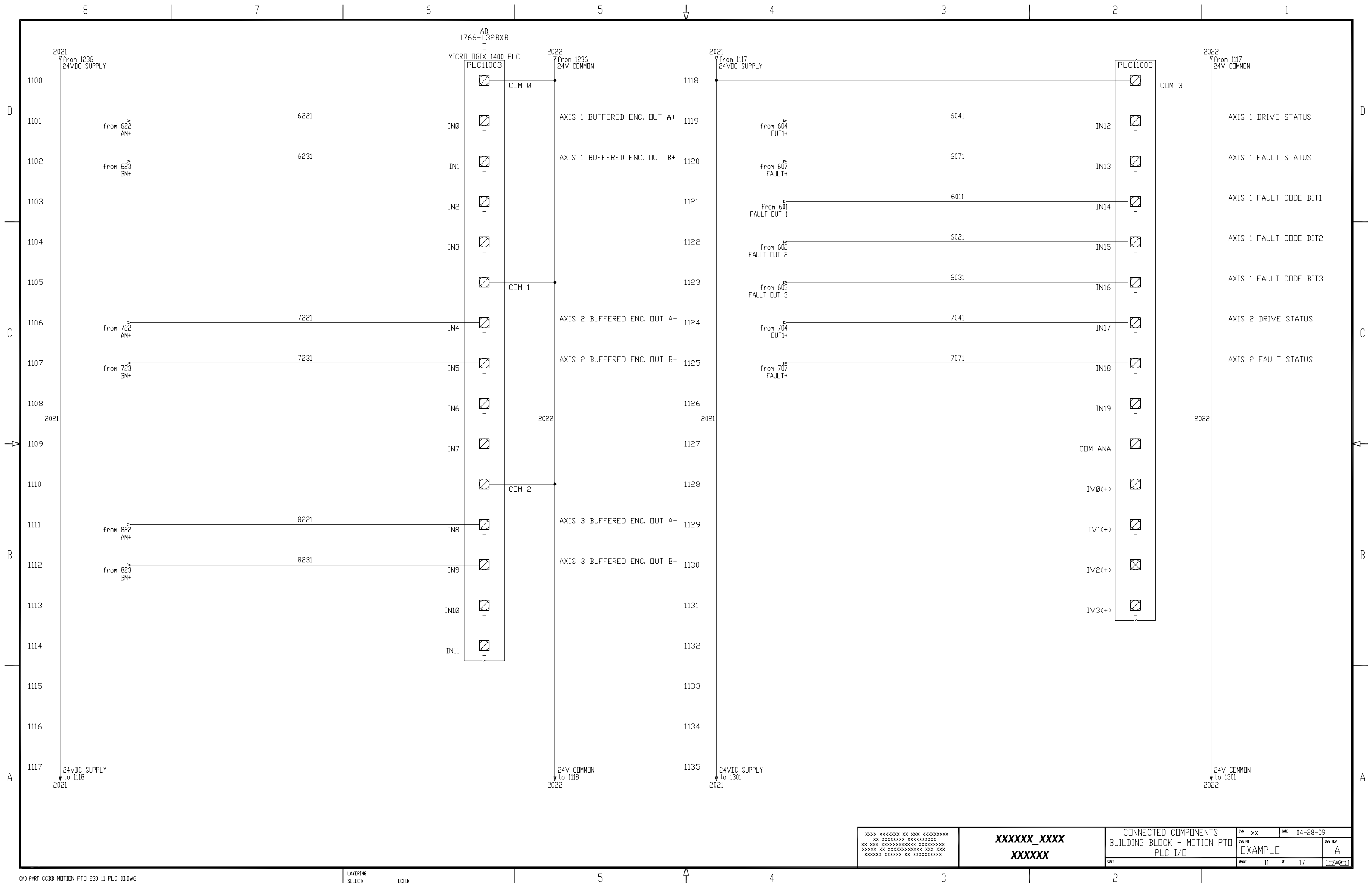
XXXX XXXXXXXX XX XXX XXXXXXXXXX XX XXX XXXXXXXXXX XXXXXXXXXX XXXXXX XX XXXXXXXXXX XXX XXX XXXXXX XXXXXXXX XX XXXXXXXXXX	XXXXXX_XXXX XXXXXX	CONNECTED COMPONENTS BUILDING BLOCK - MOTION PTO ULTRA 1500 I/O AXIS 3		DWG NO EXAMPLE	DWG REV A
		DATE 04-28-09	SHEET 8	OF 17	DWG REV A

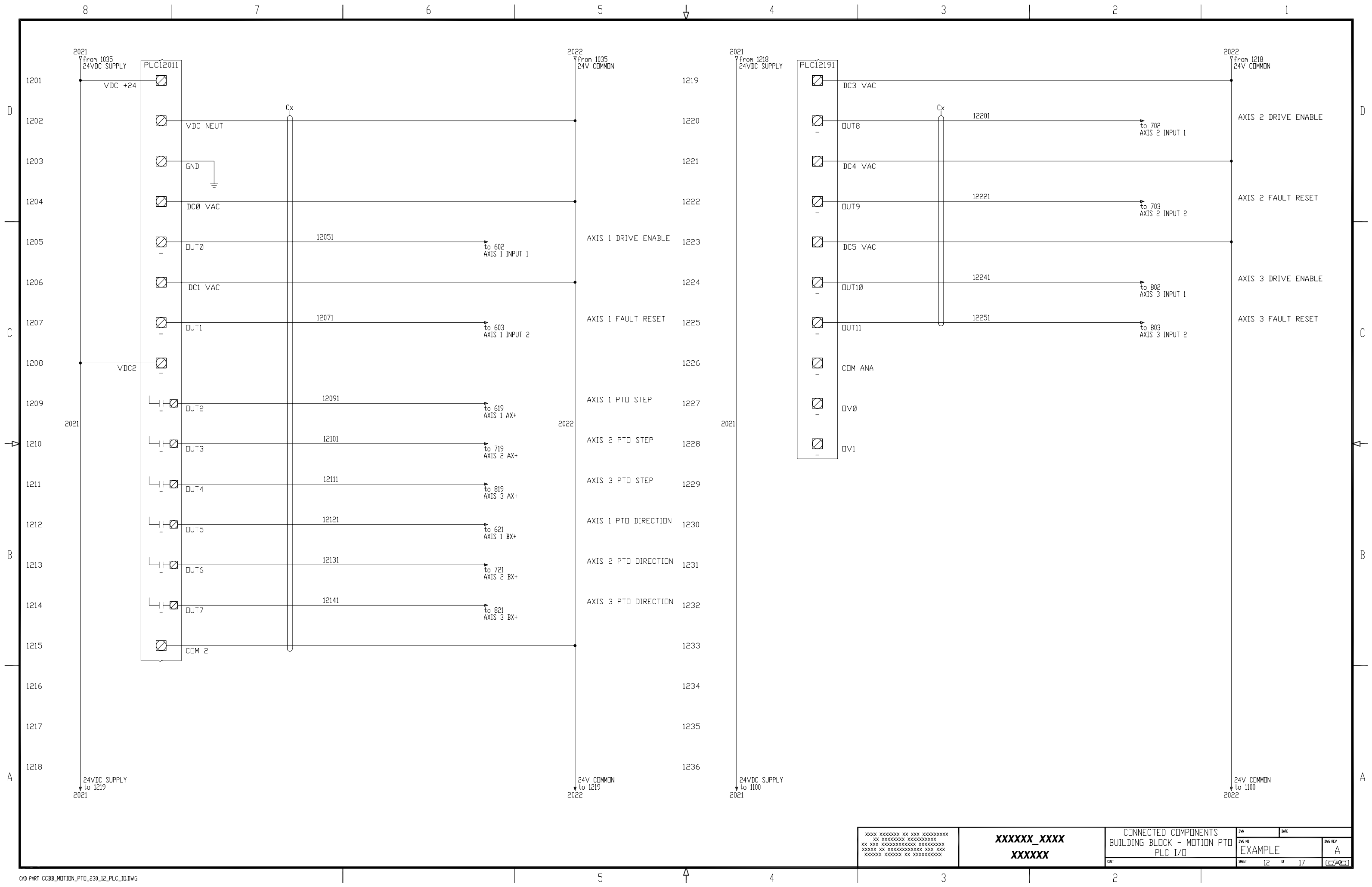


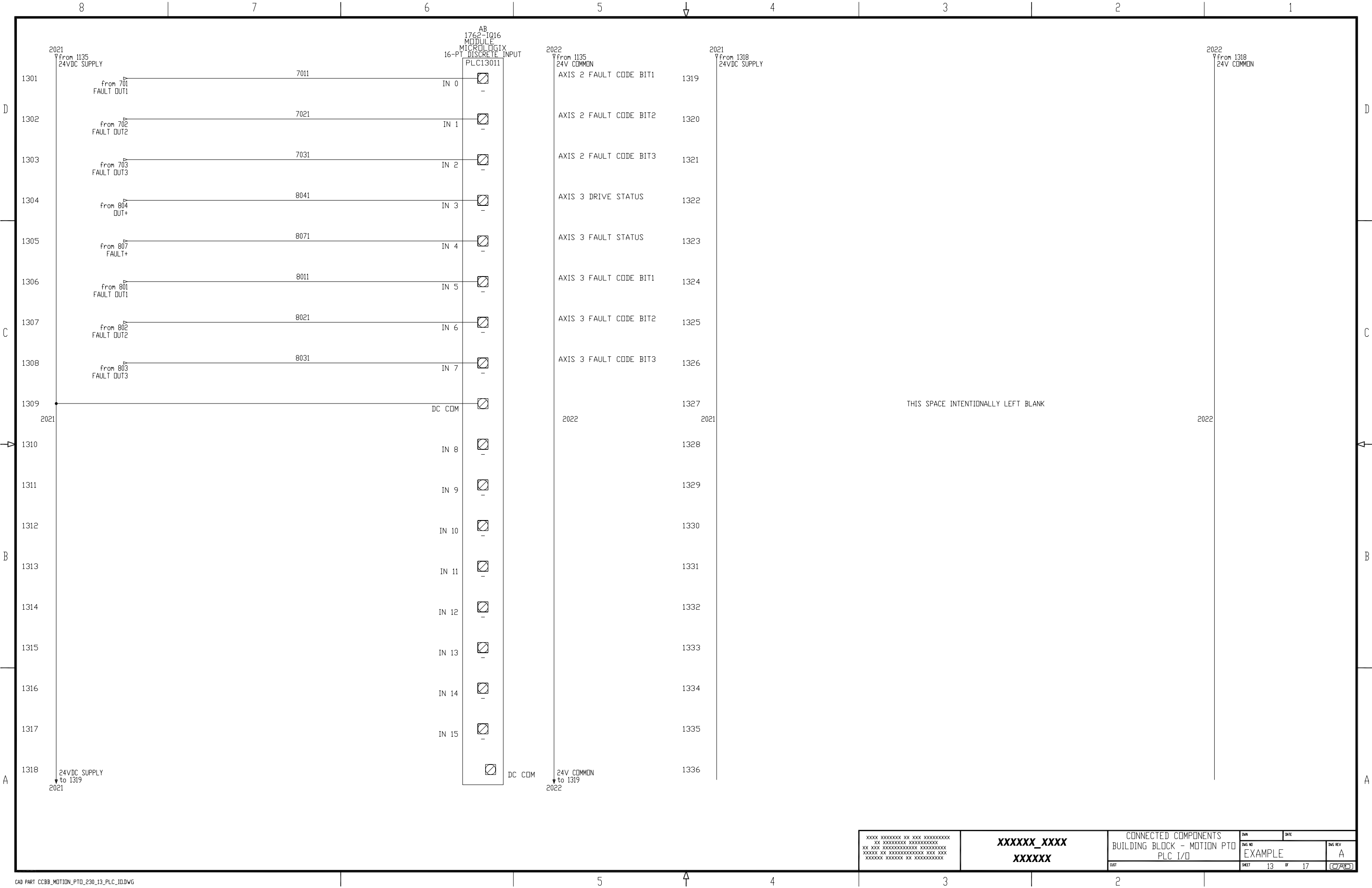


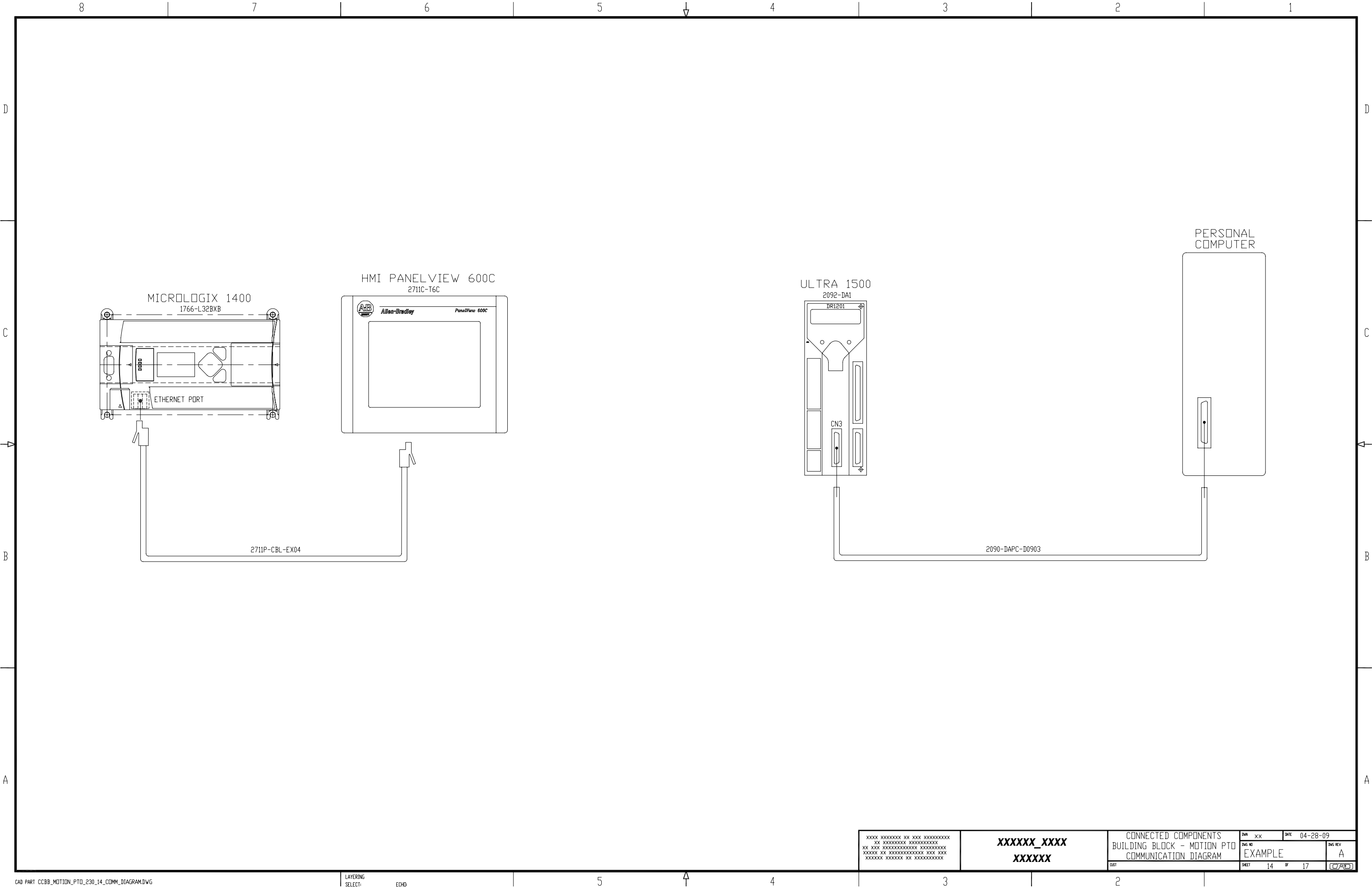
NOTES:
1. ALL WIRES TO BE xxxV, xx*, xxx.
2. OBSERVE DIRTY/CLEAN WIRING PRACTICES.
3. Dx/Cx MARKERS INDICATE WIRE WAY ROUTING FOR THE SELECTED WIRES (Dx = DIRTY, Cx = CLEAN)
4. ALL WIRES ARE #xx AWG, UNLESS OTHERWISE NOTED.
5. ALL WIRES ARE xxx, UNLESS OTHERWISE NOTED.
6. ALL GROUND WIRES ARE #xx AWG xxxxxx, UNLESS OTHERWISE NOTED.

XXXX XXXXXXXX XX XXX XXXXXXXXXX XX XXXXXXXXXX XXXXXXXXXX XX XXX XXXXXXXXXX XXXXXXXXXX XXXXXX XX XXXXXXXXXX XXX XXX XXXXXX XXXXXX XX XXXXXXXXXX	XXXXXX_XXXX XXXXXX	CONNECTED COMPONENTS BUILDING BLOCK - MOTION PTO DRIVE ENCODERS		DWG XX	DATE 04-28-09
				DWG NO EXAMPLE	DWG REV A
				CUST	









XXXX XXXXXXXX XX XXX XXXXXXXX
XX XXXXXXXX XXXXXXXX
XX XXX XXXXXXXX XXXXXXXX
XXXXXX XX XXXXXXXX XXX XXX
XXXXXX XXXXXX XX XXXXXXXX

XXXXXX_XXXX
XXXXXX

CONNECTED COMPONENTS
BUILDING BLOCK - MOTION PTO
COMMUNICATION DIAGRAM

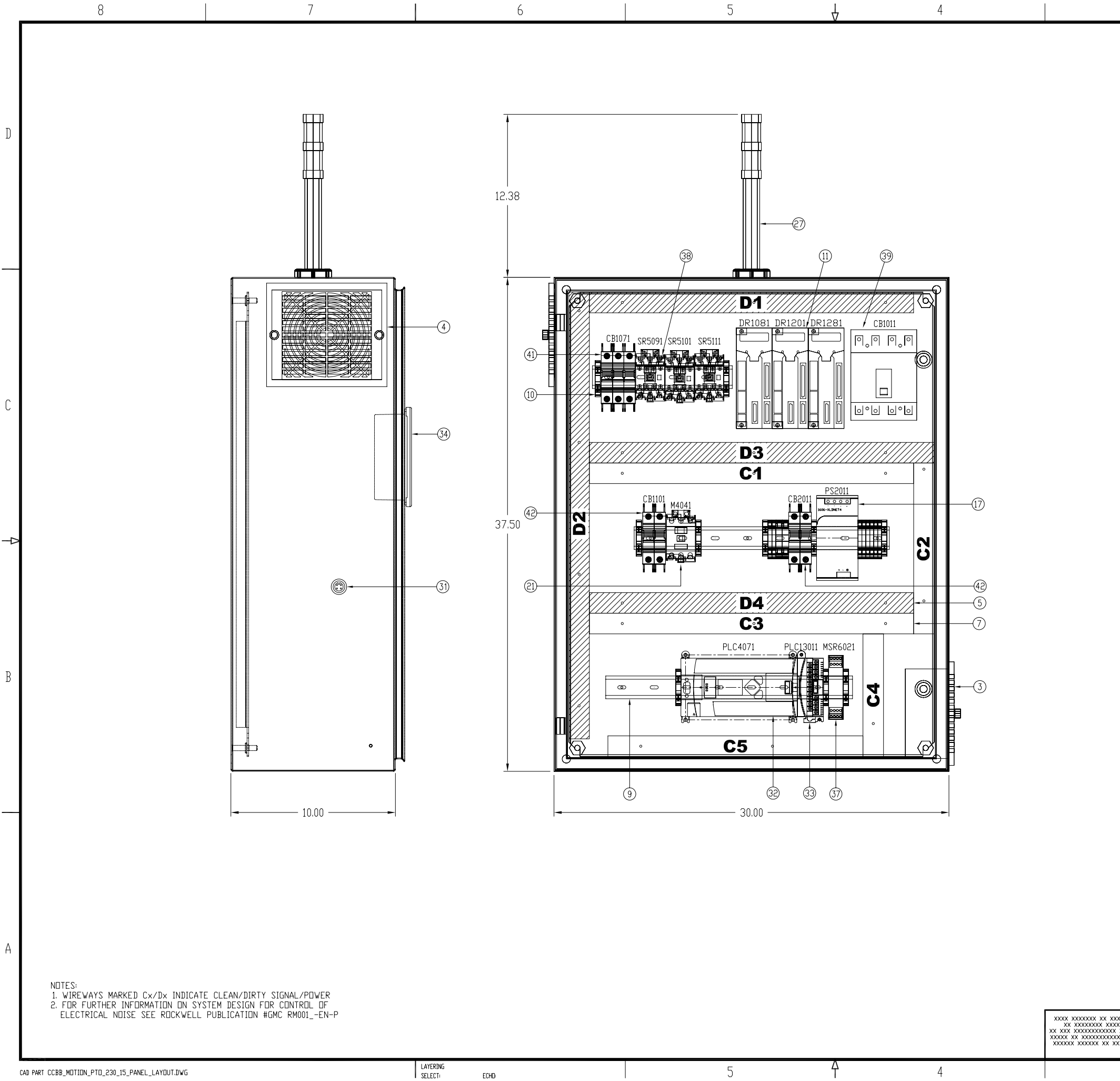
DWG XX DATE 04-28-09

DWG NO
EXAMPLE

DWG REV
A

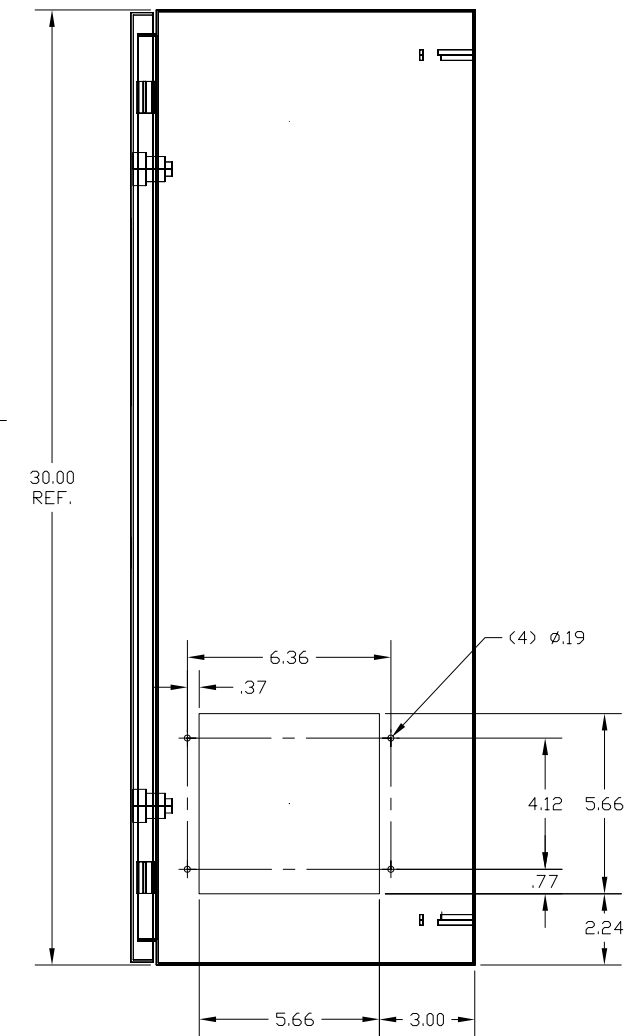
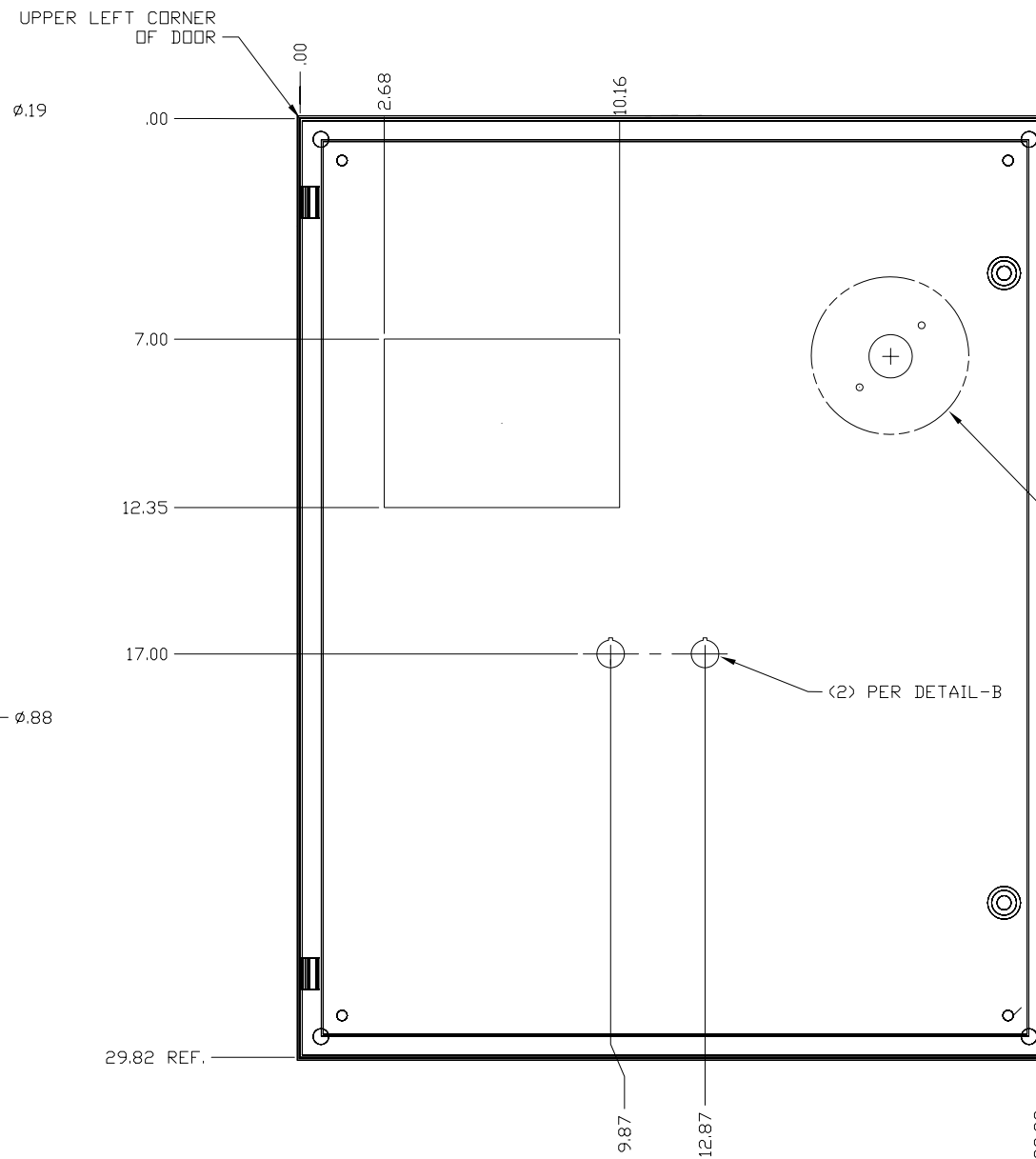
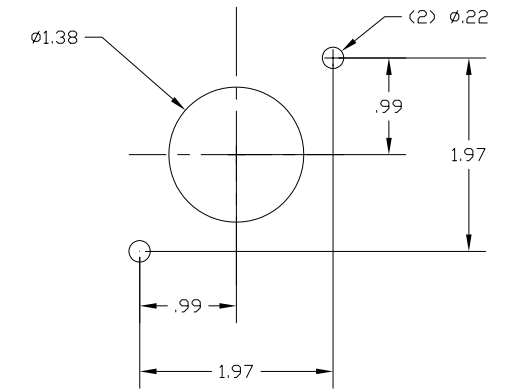
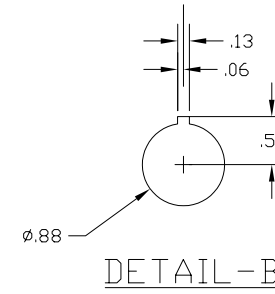
SHEET 14 OF 17

CAD



ITEM	QTY	DESCRIPTION	MFG	CATALOG
1	1	NEMA1 ENCLOSURE 30"x24"x10"	HOFFMAN	CSD302410
2	1	PANEL FOR ENCLOSURE 21"x22.5"	HOFFMAN	CP3024
3	1	FAN KIT 115VAC WITH FILTER	HOFFMAN	TFP41
4	1	EXHAUST GRILL WITH FILTER	HOFFMAN	TEP4
5	-	PANDUIT WIRE DUCT, 1"x4" GRAY	PANDUIT	F1X4LG6
6	-	PANDUIT WIRE DUCT COVER, 1" GRAY	PANDUIT	C1LG6
7	-	PANDUIT WIRE DUCT, 1"x4" WHITE	PANDUIT	F1X4WH6
8	-	PANDUIT WIRE DUCT COVER, 1" WHITE	PANDUIT	C1WH6
9	-	35MM DIN RAIL	AB	199-DR1
10	8	END ANCHOR USED W/STANDARD 35MM DIN	AB	1492-EAJ35
DRIVE SYSTEM COMPONENTS				
11	3	DRIVE, 1.4A/3.4A, ULTRA1500 DIGITAL SERVO DRIVE	AB	2092-DA1
12	3	CABLE, NON-FLEX,CN1 CONTROL, 03M	AB	2090-DAIO-D5003
13	1	CABLE, NON-FLEX,CN3 SERIAL COMMUNICATION, 03M	AB	2090-DACPD0903
14	3	TL-SERIES SERVO MOTOR,230V AC,FRAME SIZE:46mm	AB	TL-A110P-BJ32AA
15	3	CABLE, NON-FLEX, MOTOR FEEDBACK ,22AWG, 03M	AB	2090-DANFCT-S03
16	3	CABLE, NON-FLEX, MOTOR POWER ,16AWG, 03M	AB	2090-DANPT-16S03
17	1	POWER SUPPLY 24VDC 90W 120/240V INPUT	AB	1606-XLSDNET4
ESOP AND OPTIONAL SENSOR COMPONENTS				
18	1	NON-ILLUM MUSHROOM,TWIST TO RELEASE, 40MM	AB	800FP-MT44
19	4	PLASTIC LATCH	AB	800F-ALP
20	2	22.5mm PB NO LATCH,SCREW CONTACT BLOCK 1N.C.	AB	800F-X01
21	2	MCS-C CONTACTOR, IEC,37A, 24V DC, SINGLE PACK	AB	100-C40ZJ200
22	1	800F PUSHBUTTON FLUSH GREEN	AB	800FP-F306
23	1	800F 3-POS SELECTOR MAINTAINED BLACK	AB	800FP-SM32
24	1	800F PUSHBUTTON EXTENDED RED	AB	800FP-E405
25	1	800F LEGEND PLATE "AUTO - OFF - HAND"	AB	800F-11WE104
26	3	22.5mm PB NO LATCH CONTACT BLOCK 1N.O.	AB	800F-X10
27	1	STACKLIGHT 24V GRN STEADY RED STEADY	AB	855D-P25SC20G24Y3Y4
28	1	PHOTO SWITCH RIGHTSITE RETROFLECTIVE LO/DO PNP OUT	AB	42EF-P2MPB-F4
29	1	BRACKET FOR RIGHTSIGHT IMPACT RESISTANT	AB	60-2695
30	1	PATCHCORD DC MICRO (M12) FEMALE STRAIGHT	AB	899D-F4ACDM-2
31	1	RECEPTACLE DC MICRO (M12) FEMALE STRAIGHT	AB	899D-F4AC1-1
CONTROL AND VISUALIZATION EQUIPMENT				
32	1	MICROLOGIX 1400, 24VDC POWER	AB	1766-L32BXB
33	1	MICROLOGIX 16Pt. EXPANSION MODULE	AB	1762-IQ16
34	1	6" COLOR (TRANSMISSIVE CSTN) TOUCHSCREEN	AB	2711C-T6C
35	1	ETHERNET CAT5 Crossover CABLE 4.3m(14FT)	AB	2711P-CBL-EX04
SIMPLE MOTION SAFETY EQUIPMENT				
36	1	ESTOP ROPE PULL DEVICE	AB	440E-D13118
37	1	MINOTAUR MONITORED SAFETY RELAY 24VAC/DC 2N.O.	AB	440RN23114
38	1	MCS 100S-C SAFETY CONTACTOR, 30A, 24V	AB	100S-C30J14C
380VAC-480VAC, 4POLE CB. DISCONNECT POWER OPTION				
39	1	IEC MOLDED CASE C.B., 160A, H-FRAME, RATED 32A	AB	140UE-H2E4-C32
40	1	ROTARY, VARIABLE-DEPTH OPERATING MECHANISM	AB	140U-H-RVM12R
41	1	UL489/CSA 22.2 NO 5.1 BREAKER, 3POLE, 7AMP	AB	1489-A3C070
42	1	UL489/CSA 22.2 NO 5.1 BREAKER, 2POLE, 10 AMP	AB	1489-A2D100
PROGRAMMING SOFTWARE				
43	1	RSLOGIX MICRO STARTER (ENGLISH) CD-ROM	AB	9324-RLM0100ENE
44	1	ULTRAWARE PROGRAMMING SOFTWARE	AB	2098-UWCPRG
POWER OPTION 380/400VAC, 3POLE FUSED DISCONNECT				
45	1	194R DISCONNECT, OPEN STYLE, DIN, 32A, 3POLE	AB	194R-D32-1753
46	1	OPERATING HANDLE, WITH DEFEATER, RED/YELLOW	AB	194R-HS4E
47	1	OPERATING SHAFT, STD. LENGTH, 263mm(10.3 IN.)	AB	194R-R1
48	1	UL489/CSA 22.2 NO 5.1 BREAKER, 3POLE, 7AMP	AB	1489-A3C070
49	1	UL489/CSA 22.2 NO 5.1 BREAKER, 2POLE, 10AMP	AB	1489-A2D100
POWER CIRCUIT OPTION 480VAC, 3 POLE FUSED DISCONNECT				
50	1	194R DISCONNECT, OPEN STYLE, 30A, 3POLE	AB	194R-C30-1753
51	1	OPERATING HANDLE, WITH DEFEATER, RED/YELLOW	AB	194R-HS4E
52	1	OPERATING SHAFT, STD LENGTH, 263MM(10.3 IN.)	AB	194R-R1
53	1	UL489/CSA 22.2 NO 5.1 BREAKER, 3POLE, 7AMP	AB	1489-A3C070
54	1	UL489/CSA 22.2 NO 5.1 BREAKER, 2POLE, 10AMP	AB	1489-A2D100

XXXX XXXXXXXX XX XXX XXXXXXXXXX XX XXXXXXXXXXXX XXXXXXXXXX XXXXXX XX XXXXXXXXXXXXXXX XXX XXX XXXXXXXX XXXXXXXXXXXXXXX XXXXXXXXXX	XXXXXX_XXXX XXXXXX		CONNECTED COMPONENTS BUILDING BLOCK - MOTION PTO PANEL LAYOUT		DWG NO EXAMPLE	DWG REV A
	DATE 04-28-09		SHEET 15 OF 17		CADD	



PER DETAIL-A,
(SEE SHEET 2 FOR ALL
OPERATOR OPTION
LOCATIONS)

DOOR MODIFICATION

-01	1	HOFFMAN PART CSD302410	ANSI 61 GRAY
PART NO.	CHG. CHAR.	MATERIAL	SURFACE TREATMENT

CAD PART CCBB_MOTION_PTO_230_16_ENCLOSURE_DOOR_LAYOUT.DWG

LAYERING
SELECT:

ECHO:


```

XXXX XXXXXXXX XX XXX XXXXXXXXXX
  XX XXXXXXXX XXXXXXXXXX
XX XX XXXXXXXXXX XXXXXXXX
XXXXX XX XXXXXXXXXXXX XXX XX
XXXXXX XXXXXX XX XXXXXXXXXX

```

XXXXXX_XXXX
XXXXXX

CONNECTED COMPONENTS
BUILDING BLOCK - MOTION PT
ENCLOSURE DOOR LAYOUT

DWG	xx	DATE	04-28-09
DWG NO	EXAMPLE		DWG REV
			A
SHEET	16	OF	17
			

8

7

6

5

4

3

2

1

51

"F" FRAME CIRCUIT BREAKER

50

ROTARY VARIABLE DEPTH MECHANISM

54

MICROLOGIX 1200

52

30A FUSED DISCONNECT

55

ETHERNET SWITCH

56

REMOTE ACCESS ETHERNET SWITCH

53

60A FUSED DISCONNECT

57

ETHERNET SWITCH

58

ETHERNET SWITCH

ADDITIONAL PARTS LIST

ITEM	DESCRIPTION	MFG	CATALOG
50	ROTARY VARIABLE DEPTH MECHANISM	AB	140U-RVM12R
51	"F" FRAME CIRCUIT BREAKER	AB	140UE-H2EA-C32
52	30A FUSED DISCONNECT	AB	194R-C30-1753
53	60A FUSED DISCONNECT	AB	194R-D32/D63-1753
54	MICROLOGIX 1200, 24VDC POWER	AB	1762-L24BXR
55	STRATIX 6000, 8 PORT ETHERNET SWITCH	AB	9300-8EDM
56	REMOTE ACCESS ETHERNET SWITCH	AB	9300-RADES
57	STRATIX 6000 SWITCH, ENTRY-LEVEL MANAGED, 8-PORT	AB	1783-EMS08T
58	STRATIX 2000 SWITCH, UNMANAGED, 5-COPPER PORTS	AB	1783-US05T

CAD PART CCBB_MOTION_PTO_230_17_ADDITIONAL_PARTS.DWG

LAYERING SELECT: ECHD:

5

4

3

2

XXXX XXXXXXXX XX XXX XXXXXXXXXX
XX XXXXXXXXXX XXXXXXXXXX
XX XXX XXXXXXXXXX XXXXXXXXXX
XXXXXX XX XXXXXXXXXX XXX XXX
XXXXXX XXXXXX XX XXXXXXXXXX

XXXXXX_XXXX
XXXXXX

CONNECTED COMPONENTS
BUILDING BLOCK - MOTION PTO
ADDITIONAL PARTS

DWG NO
EXAMPLE

DWG REV
A

DATE 04-28-09

SHEET 17 OF 17

CAD